

Only Emergency Generator Maker



This is GPC

GPC

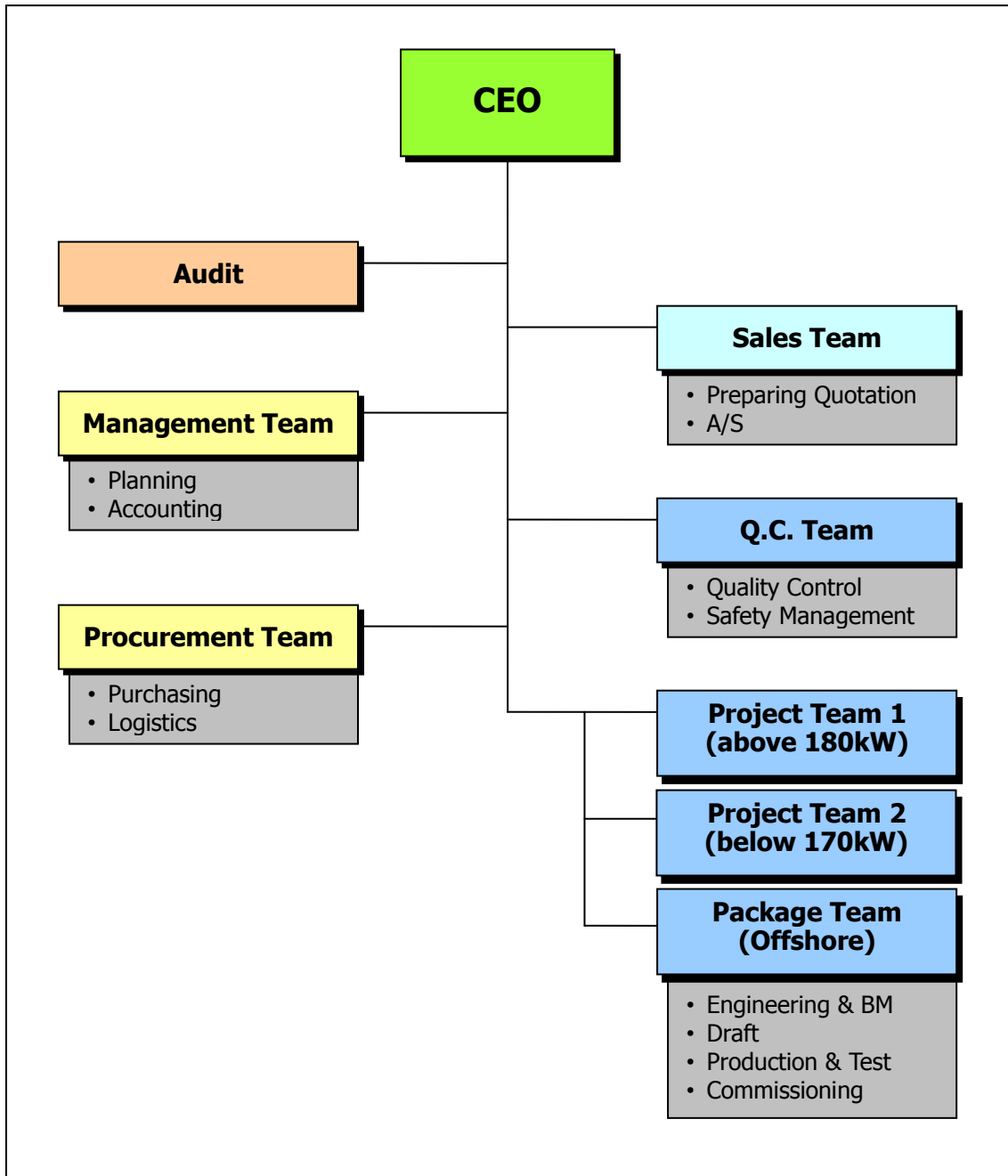
<http://www.gpckorea.com>

- History
- Organization
- Outline of Emergency Generator
- Characteristics of Emergency Generator
- Specification
- Starting System
- Supplier of parts
- Business Procedure
- Production Process
- Facility
- Suggestion

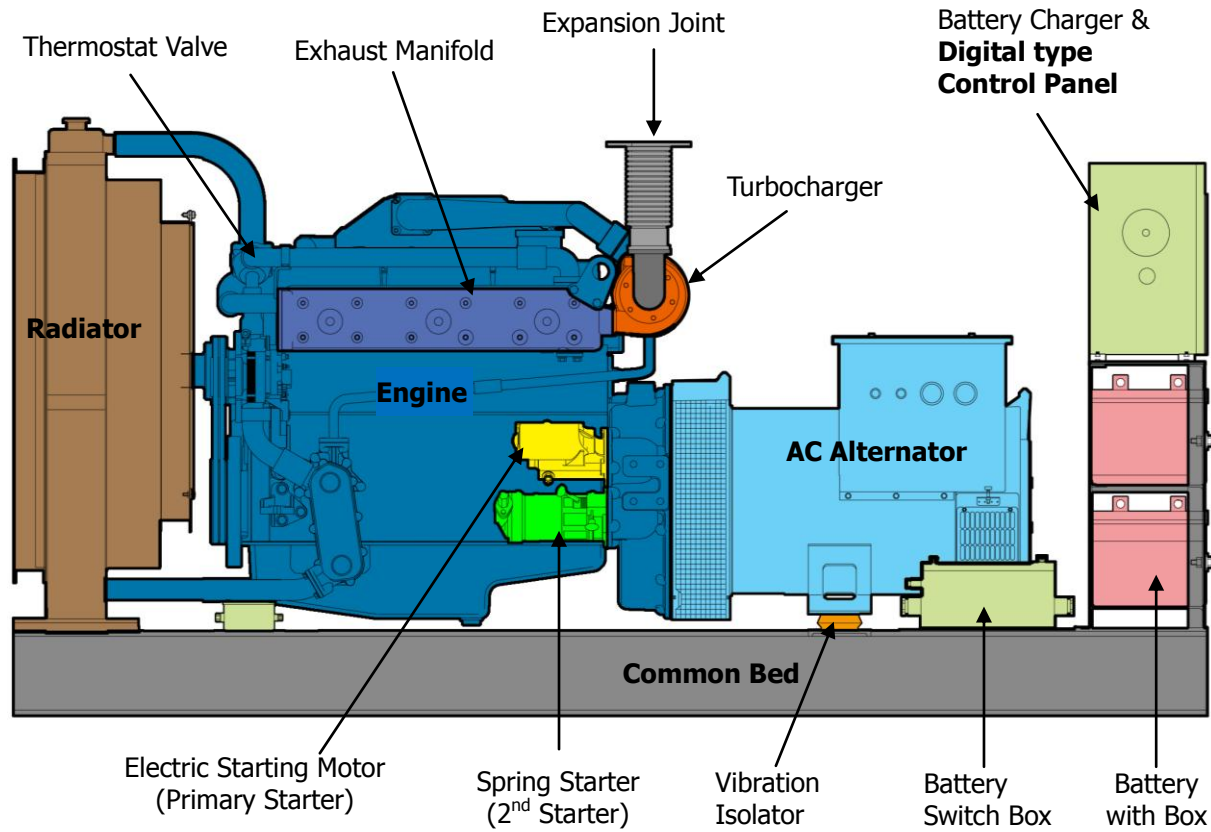
◎ History

- 2002.08 Establishment
- 2002.11 Vendor of Daewoo Shipbuilding Marine Engineering Co.
- 2003.02 Vendor of Hanjin Heavy Industries & Construction Co.
- 2003.06 Vendor of Shin-a(SLS) Shipbuilding Co
- 2003.09 ISO 9001
- 2004.05 Vendor of Hyundai Mipo Docking Co
- 2004.06 Installation of 800kW test load
- 2004.12 Vendor of Samsung Heavy Industries Co
- 2005.02 Vendor of Hyundai Heavy Industries Co
- 2005.03 Installation of 1,200kW test load
- 2006 10 Production of 910kW Emergency Generator for LNG Ship for SHI
- 2007 05 Production of Dead Ship Generator 350kW(690V)
- 2007 09 Moved to the new plant & office
- 2008 06 New line-up with Doosan Infracore marine diesel engine
- 2008 08 Shanghai(China) Office Open
- 2008 12 Delivery of 140kW Emergency Generator set for USC
- 2009 06 Development of Digital type control panel
for Marine Emergency Diesel Generator
- 2010 05 Delivery of VSP 275kW Generator Package for WHRP Platform
- 2010 07 Order of Emergency Generator for General Cargo Vessel
from Mitsubishi Heavy Industries
- 2011 05 Approval of Japanese Government Regulation for Car/Ferry vessel

◎ Organization



Outline of Emergency Generator



Emergency Generator set



150kW Emergency Diesel Generator Set

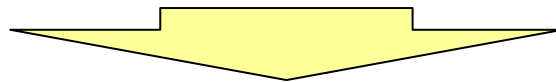


200kW Emergency Diesel Generator Set

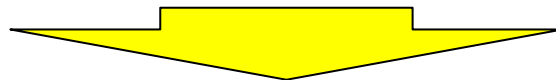
Characteristic of Emergency Generator **GPC**

Special requirement for Emergency Generator

- **PRIME MOVER**
 - Marine Prime Rating
 - High speed diesel engine
 - Mechanical Governor
- **DUAL STARTING SYSTEM**
- **AUTHORIZED CLASS SOCIETY CERTIFICATION**
- **TECHNICAL DOCUMENT**
 - Discussion / Approval / Working / Final Drawing



PROFFESIONAL ENGINEERING COMPANY



- **CUSTOMER ORIENTED**
- **DEVELOPING PROJECT EXECUTION**
 - On time
 - Meet to budget
- **CUSTOMER ACCEPTANCE AND FEED-BACK SYSTEM**
- **ACTIVE QUALITY AND PROCESS**
 - Improvement system

◎ GPC Emergency Generator Set Line-up

▪ 60Hz, 1,800rpm, 450V, IP23, Insulation Class "H" with Temperature rise "F"

Output (kW)	Diesel Engine		AC Generator	Remark
	Model	kW	Leroy Somer	
100	AD136TI	138	44.2 S7 C6/4	2,800×1,150×1,550(mm) / 1,700kg
105	AD136TI	138	44.2 S75 C6/4	2,850×1,150×1,550(mm) / 1,750kg
120	AD136TI	138	44.2 M95 C6/4	2,850×1,150×1,550(mm) / 1,800kg
125	AD136TI	138	44.2 M95 C6/4	2,850×1,150×1,550(mm) / 1,800kg
130	AD086TI	186	44.2 L12 C6/4	2,900×1,400×1,550(mm) / 1,800kg
150	AD086TI	186	46.2 M3 C6/4	2,900×1,400×1,550(mm) / 1,700kg
160	AD086TI	186	46.2 M5 C6/4	2,900×1,400×1,550(mm) / 1,700kg
180	AD126TI	247	46.2 L6 C6/4	3,000×1,450×1,550(mm) / 2,500kg
200	AD126TI	247	46.2 L6 C6/4	3,000×1,450×1,550(mm) / 2,500kg
250	AD158TI	353	46.2 VL12 C6/4	3,050×1,500×1,750(mm) / 3,000kg
300	AD158TI	353	47.2 VS2 C6/4	3,050×1,500×1,750(mm) / 3,100kg
350	AD180TI	441	47.2 S4 C6/4	3,100×1,550×1,800(mm) / 3,850kg
400	AD180TI	441	47.2 M7 C6/4	3,100×1,550×1,800(mm) / 3,950kg
450	AD222TI	530	47.2 M7 C6/4	3,250×1,550×1,850(mm) / 4,250kg
500	AD222TI	530	49.1 S4 C6/4	3,250×1,550×1,850(mm) / 4,450kg
550	KTA38DM	768	49.1 S4 C6S/4	4,600×1,800×2,700(mm) / 8,100kg
600	KTA38DM	768	49.1 M6 C6S/4	4,600×1,800×2,700(mm) / 8,300kg
750	KTA38DM	910	50.2 M6 C6S/4	4,600×1,800×2,700(mm) / 8,500kg
800	KTA38DM	910	50.2 M6 C6S/4	4,600×1,800×2,700(mm) / 8,500kg
850	KTA38DM	1,007	50.2 M6 C6S/4	4,600×1,800×2,700(mm) / 8,600kg
900	KTA38DM	1,007	50.2 M6 C6S/4	4,600×1,800×2,700(mm) / 8,600kg
1,000	KTA50DM	1,220	50.2 L7 C6S/4	5,200×1,900×2,800(mm) / 10,500kg

Note : Engine Identification.

- AD Series : DOOSAN INFRACORE ENGINE
- Others : CUMMINS ENGINE

◎ GPC Auxiliary/Harbor Generator Line-up

▪ Engine maker : MAN-Diesel Engine

Output (kW)	Diesel Engine		AC Generator	Remark
	Model	kW	Leroy Somer	
200	D2866 LXE20	280	46.2 L6 C6/4	3,080×1,450×1,650(mm) / 2,700kg
250	D2866 LE201	322	46.2 VL12 C6/4	3,080×1,450×1,650(mm) / 2,800kg
300	D2866 LE203	364	47.2 VS2 C6/4	3,080×1,450×1,650(mm) / 2,850kg
350	D2876 LE201	405	47.2 S5 C6/4	3,100×1,500×1,800(mm) / 3,850kg
400	D2876 LE203	460	47.2 M7 C6/4	3,100×1,500×1,800(mm) / 3,900kg
430	D2840 LE201	515	47.2 M7 C6/4	3,250×1,500×1,850(mm) / 4,250kg
450	D2840 LE203	532	47.2 L9 C6S/4	3,250×1,500×1,850(mm) / 4,300kg
500	D2842 LE201	620	49.1 S4 C6S/4	3,900×1,550×1,850(mm) / 4,450kg
550	D2842 LE201	620	49.1 S4 C6S/4	3,900×1,550×1,850(mm) / 4,450kg
600	D2842 LE203	653	49.1 M6 C6S/4	3,900×1,550×2,100(mm) / 4,650kg

▪ **60Hz(1,800rpm), 450V, 3ph**
IP23, Insulation Class "H" with Temperature rise "F"

▪ **NOx Certificate (IMO2, TIER-II)**

Secondary Starting GPC

Output(kW)	60 ~ 100	120 ~ 170	180 ~ 220	250 ~ 1,000	Remarks
Battery					
Spring					
Hydraulic					
Air					

Maker Standard
 Maker Option

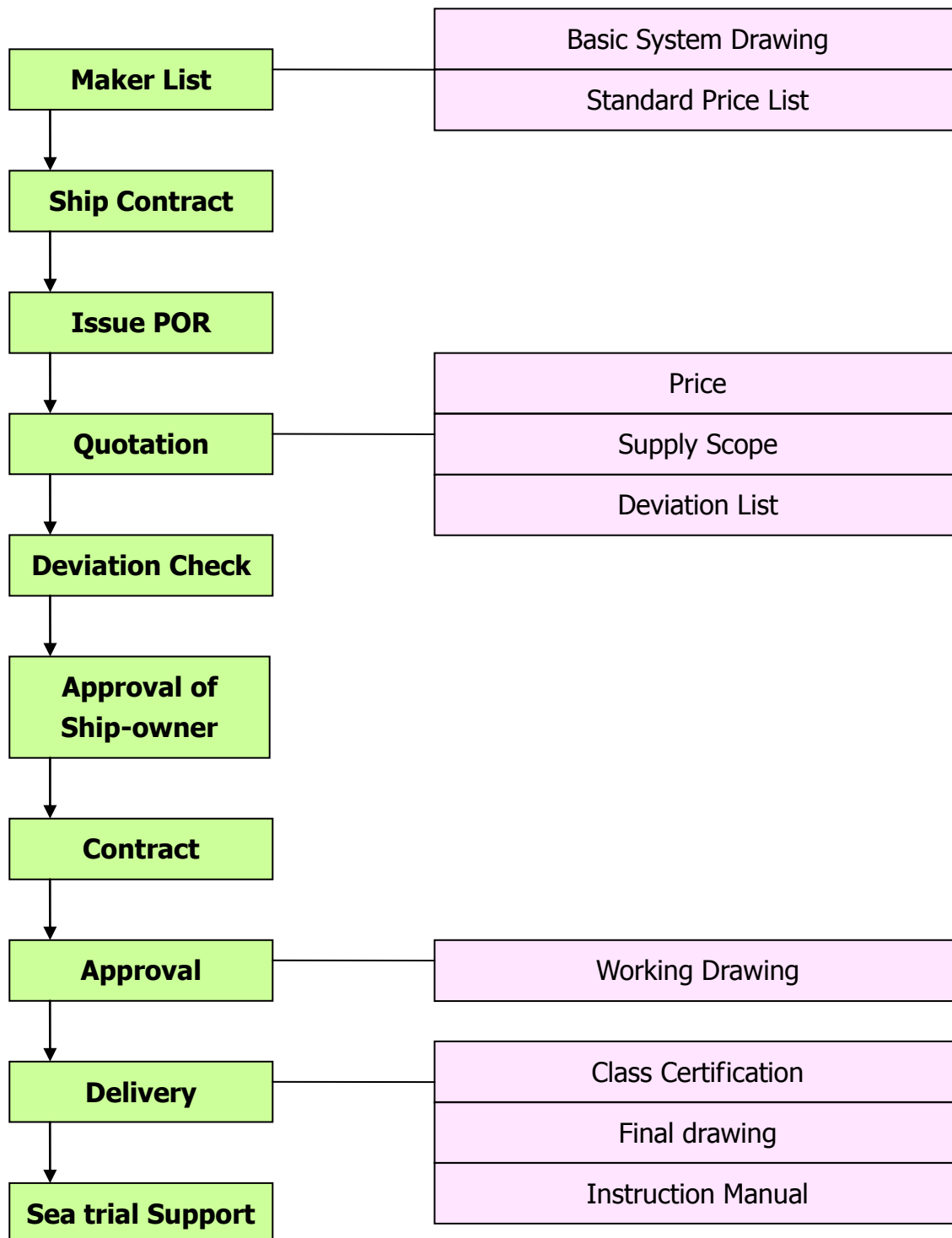
※ PRIMARY STARTING METHOD : ELECTRIC BATTERY SYSEM

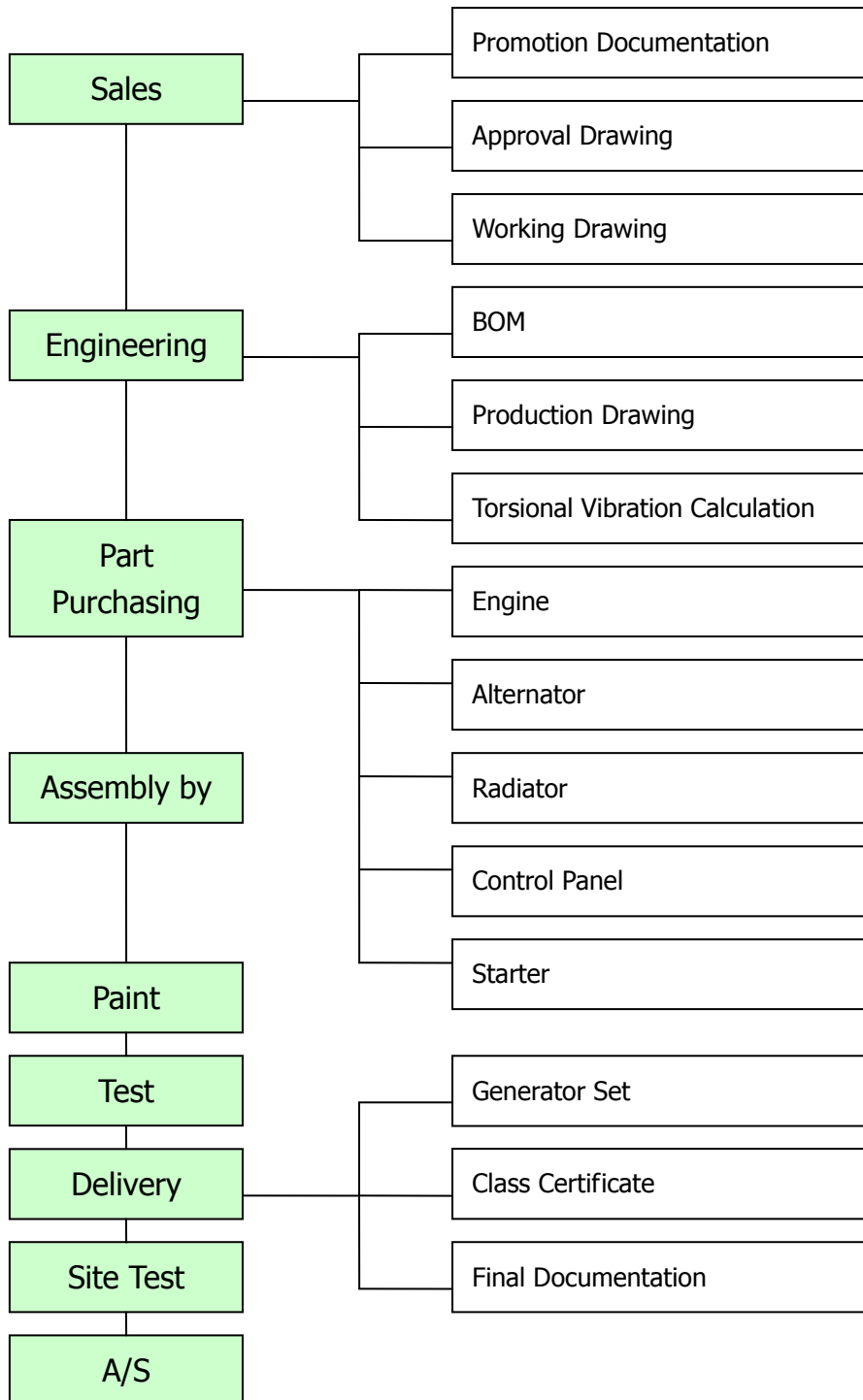


Supplier of Part

GPC

Unit Name	Supplier	Remarks
Diesel Engine	DOOSAN INFRACORE	KOREA
Alternator	EMERSON LEROY SOMER CUMMINS GENERATOR	CHINA UK
Hydraulic Starting	PRESTOLITE HUEGLI TECH AG	UK USA
Air Starting	INGERSOLL RAND TDI	USA USA
Spring Starting	STARTWELL	UK
Vibration Isolator	TRELLEBORG RUBBER DESIGN YOUIL ENSYS	UK NETHERLANDS KOREA
Radiator	DAEHEUNG RADIATOR	KOREA
Common bed	DOOSUNG	KOREA
Coolant Heater	KMC	KOREA
Silencer Expansion joint	DAEDONG	KOREA
Battery Charger	KMC / KOMECO	KOREA
Control Panel	KMC / KOMECO	KOREA







1. Facility site 3,000 m²
 - Workshop & test area 1,000 m²
 - Office : 170 m²
2. Lift Capacity : 15 ton Crane, 10 ton Crane
3. Test Equipment 5 Set
 - 3.1 Control Panel
 - 3.2 Resistor Load Bank : 1,200 kW
 - 3.3 Temperature and Pressure Alarm Tester
 - 3.4 Graphic recorder for governor test, Vibration meter, etc.
4. Assembly : Torque Wrench, etc (380set)
5. Paint Booth : 50 m²
6. Production Capacity : 600 Sets / year
7. Others
 - 7.1 Bench Drill Machine, Hand Grinder, Cutter, etc
 - 7.2 CO₂ Welding Machine, etc
8. Address

#794, Jinyeoung-li, Jinyeong-eup, Gimhae, Gyeongnam, Korea
 Tel : +82 55 343 9870, Fax : +82 55 343 9875, e-mail : gpc@korea.com

ACTIVITY OF GPC

- **SATISFY TO REQUIREMENT OF CUSTOMER**
- **MORE COMPACT SIZE**
- **VARIETY OF OPTION**
- **MINIMUM OVER-HEAD COST**

THE ONLY ONE EMERGENCY GENERATOR MAKER

ADVANTAGE OF CUSTOMER

- **PURCHASING EMERGENCY GENERATOR SET
AT REASONABLE PRICE**
- **SAVING LABOR FROM STANDARDIZATION**
- **JUST ON TIME**