

EMERGENCY GENERATOR



GPC

<http://www.gpckorea.com>



About GPC

Green Power Corporation

Since our establishment in 2002, GPC has worked with endless effort to realize innovations in management to lead the industry with new technologies and products. GPC has become the world's No.1 Emergency Generator manufacturer and demonstrated boundless imagination and technical capability in marine emergency generator sets.

All GPC Members are creating the world's best products and services and are constantly pursuing innovations and challenges with the pride as contributors to industrial development and society.

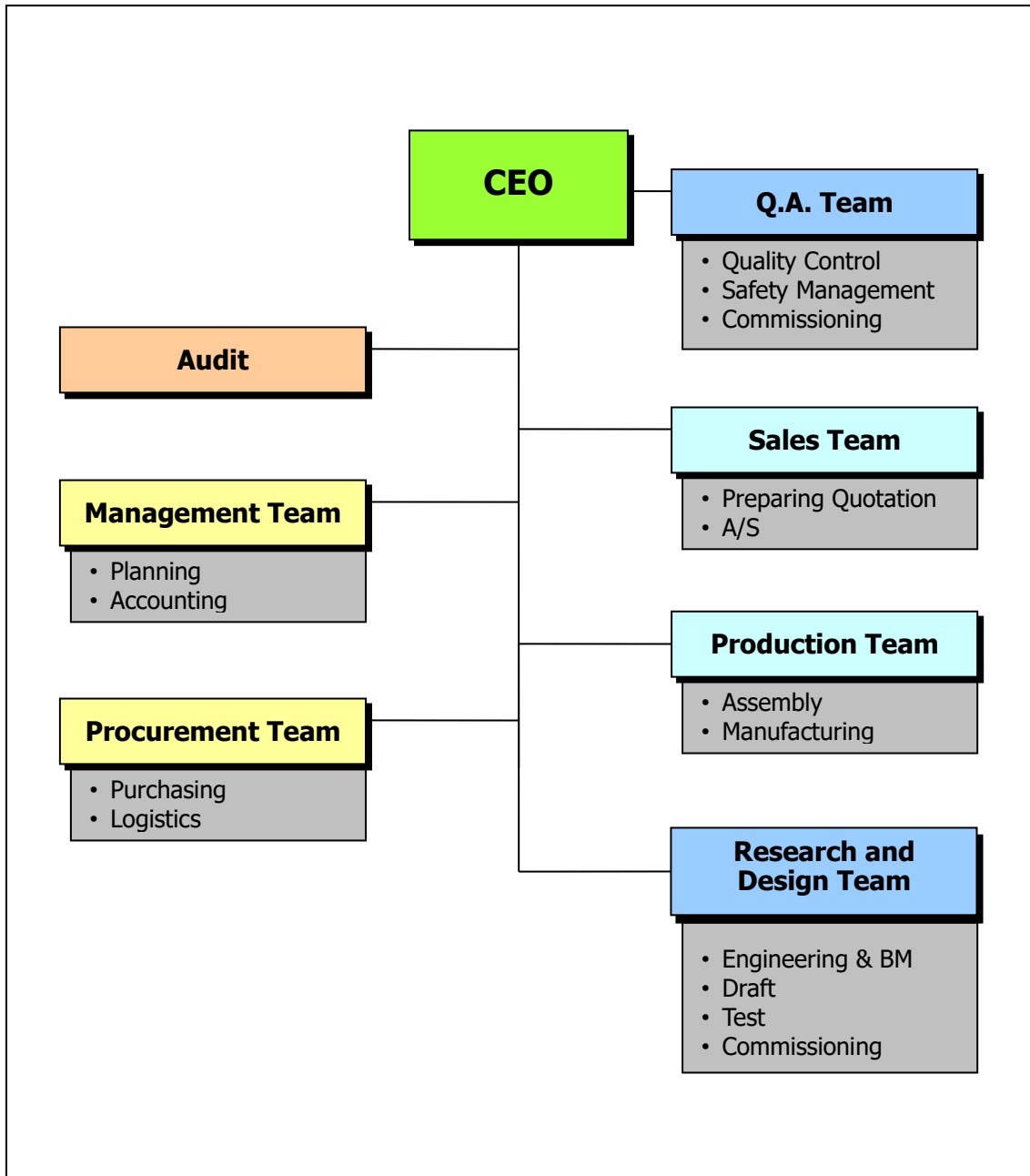
We ask for your continuous support in our efforts to deliver the best technology and products for our customers.



History

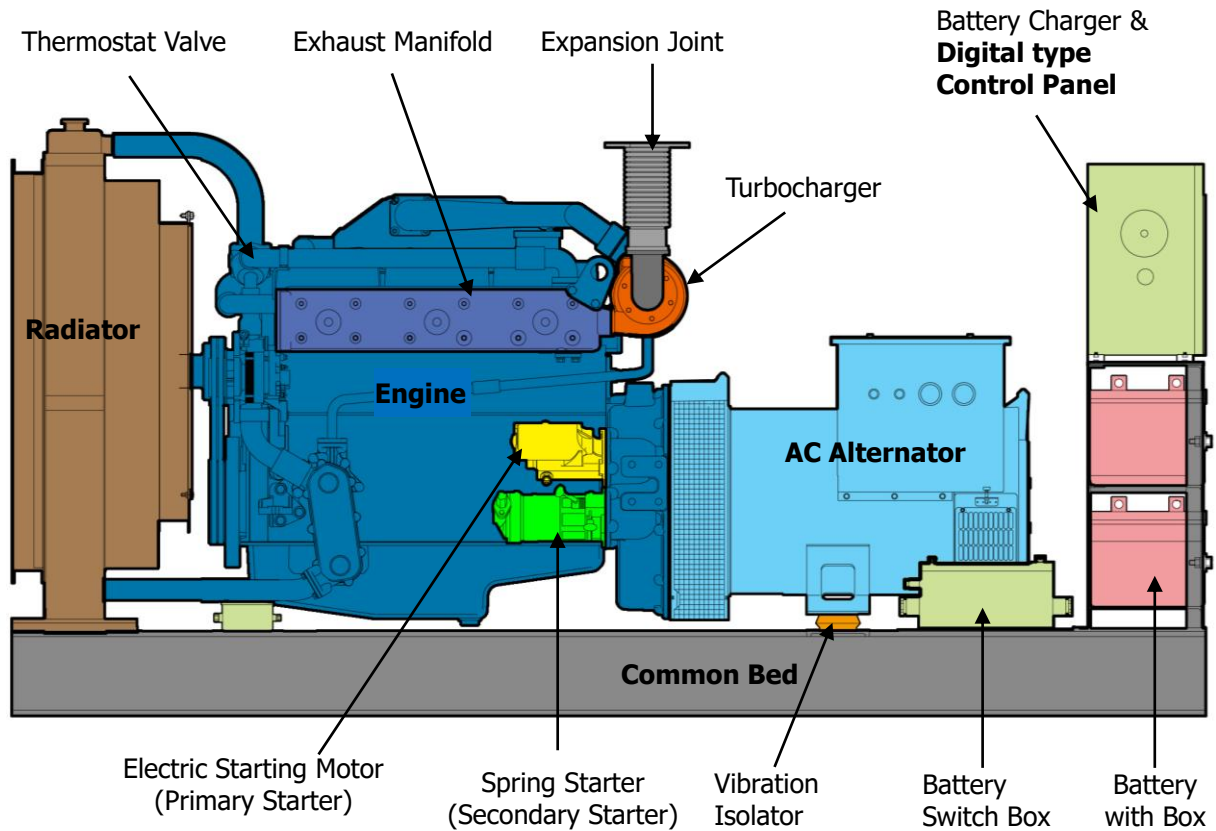
- 2002.08 Establishment
- 2002.11 Vendor of Daewoo Shipbuilding Marine Engineering Co.
- 2004.05 Vendor of Hyundai Mipo Dockyard, Samsung Heavy Industries
- 2005.02 Vendor of Hyundai Heavy Industries Co.
- 2006.10 Production of Emergency Gen-Set for LNG Ship for SHI
- 2007.05 Production of Dead Ship Gen-Set for Drill-rig
- 2007.09 Relocated Plant & Office to GIMHAE
- 2008.06 New Line-up with Doosan Infracore Marine Diesel Engine
- 2008.12 Delivery of Emergency Gen-Set to Japanese shipyard
- 2009.06 Development of Digital Type Control Panel for Emergency Gen-Set
- 2010.05 Delivery of VSP Gen-Set Package for WHRP Platform
- 2011.05 Approval of Japanese Government Regulation for Car/Ferry Vessel
- 2012.06 Delivery of Harbour Gen-Set with MAN D2842 Engines
- 2012.12 Awarded "World Class Product of Korea" by Korean Government
- 2013.07 New Line-up with MTU Marine Diesel Engine
- 2014.12 Delivery of 1,100kW(RMRS) Emergency Gen-Set for Arctic LNG Carrier
- 2015.04 Delivery of MTU Model Remote Radiator Type Gen-Set
- 2017.03 Awarded "Small Giant Company Korea 2017" by Korean Government
- 2018.01 New Line-up with WEICHA I Diesel Engine for below 100kW Gen-set

Organization



- Office Main Number : +82-55-343-9870
- Sales Team - Korean Market : +82-55-343-9874
- Sales Team - Overseas Market : +82-55-343-9878
- Q.A Team : +82-70-5056-6464

Outline of Emergency Generator



Emergency Generator Set (150kW, 60Hz)

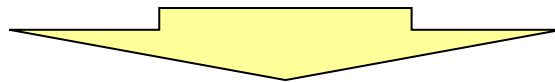


Digital Type Control Panel

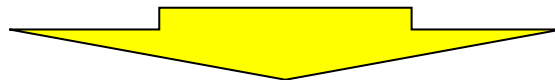
Characteristics of Emergency Generator

Special Requirements for Emergency Generator

- **PRIME MOVER**
 - Marine Prime Rating
 - High Speed Diesel Engine
 - Variety of Options
- **DUAL STARTING SYSTEM**
- **AUTHORIZED CLASS SOCIETY CERTIFICATION**
- **TECHNICAL DOCUMENT**
 - Discussion / Approval / Working / Final Drawing



PROFESSIONAL ENGINEERING COMPANY



- **CUSTOMER ORIENTED**
- **DEVELOPING PROJECT EXECUTION**
 - On time
 - Meet Budget
- **CUSTOMER ACCEPTANCE AND FEED-BACK SYSTEM**
- **ACTIVE QUALITY AND PROCESS**
 - Improvement System

Specification of Generators

Powered by **DOOSAN INFRACORE** Engines

Emergency Generator Set

Gen-Set Ratings (kW)	Diesel Engine		Dimension L x W x H (mm)	Weight (kg)
	Model	Output (kW)		
100 ~ 125	AD136TI	138	2,750×950×1,450	1,700
126 ~ 165	AD086TI	186	2,910×950×1,550	2,000
166 ~ 220	AD126TI	247	3,300×1,150×1,550	2,550
221 ~ 270	4AD126TI	302	3,400×1,150×1,600	2,800
271 ~ 320	AD158TI	353	3,450×1,400×1,800	3,200
321 ~ 400	AD180TI	441	3,500×1,400×1,850	4,000
401 ~ 500	AD222TI	530	3,800×1,400×1,950	4,450

Powered by **WEICHAI** Engines

Emergency Generator Set

Gen-Set Ratings (kW)	Diesel Engine		Dimension L x W x H (mm)	Weight (kg)
	Model	Output (kW)		
30 ~ 40	WP4CD55E201	50	2,300×900×1,400	1,250
41 ~ 50	WP4CD66E201	60	2,300×900×1,400	1,250
51 ~ 80	WP4CD100E201	90	2,400×900×1,400	1,300

- 60Hz, 1,800rpm, AC450V, IP23, Insulation Class "H" with Temperature Rise Class "F"

Specification of Generators

Powered by **CUMMINS** Engines

Emergency Generator Set

Gen-Set Ratings (kW)	Diesel Engine		Dimension L x W x H (mm)	Weight (kg)
	Model	Output (kW)		
600 ~ 910	KTA38DM	1,007	5,200×1,850×2,650	8,000
911 ~ 1,100	KTA50DM	1,220	6,000×1,850×2,650	11,500
1,101 ~ 1,500	QSK50DM1	1,628	7,000×2,500×2,950	14,800
1,501 ~ 1,800	QSK60DM	2,000	7,200×2,500×2,950	17,000

Powered by **MTU** Engines

Emergency Generator Set

Gen-Set Ratings (kW)	Diesel Engine		Dimension L x W x H (mm)	Weight (kg)
	Model	Output (kW)		
500 ~ 630	12V 2000 P82	695	4,450×2,100×2,650	6,600
631 ~ 850	16V 2000 P82	930	5,100×2,450×3,150	8,500
851 ~ 1,500	12V 4000 P83	1,680	6,400×3,800×2,750	13,800
1,501 ~ 1,950	16V 4000 P83	2,240	6,650×3,800×2,750	15,500
1,951 ~ 2,500	20V 4000 P83	2,800	8,500×3,800×3,600	21,200

- 60Hz, 1,800rpm, AC450V, IP23, Insulation Class "H" with Temperature Rise Class "F"

Option Parts of Generator Set

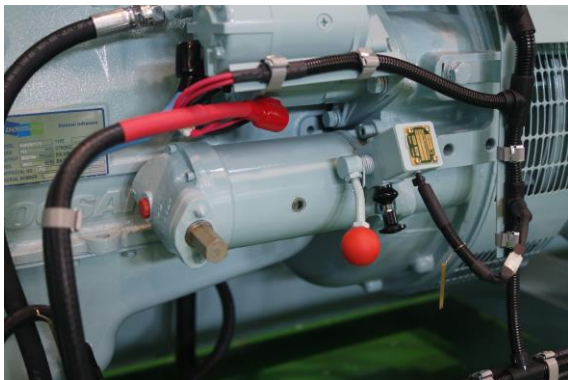
Secondary Starting System

※ Primary Starting Method : Electric Battery System

Output(kW)	30 ~ 80	100 ~ 165	180 ~ 270	300 ~ 500	550 ~
Battery					
Spring					
Hydraulic					
Air					

Maker Standard

Maker Option



<Spring Starter>



<Hydraulic Starter – Prestolite type>



<Hydraulic Starter - Hydrotor type >

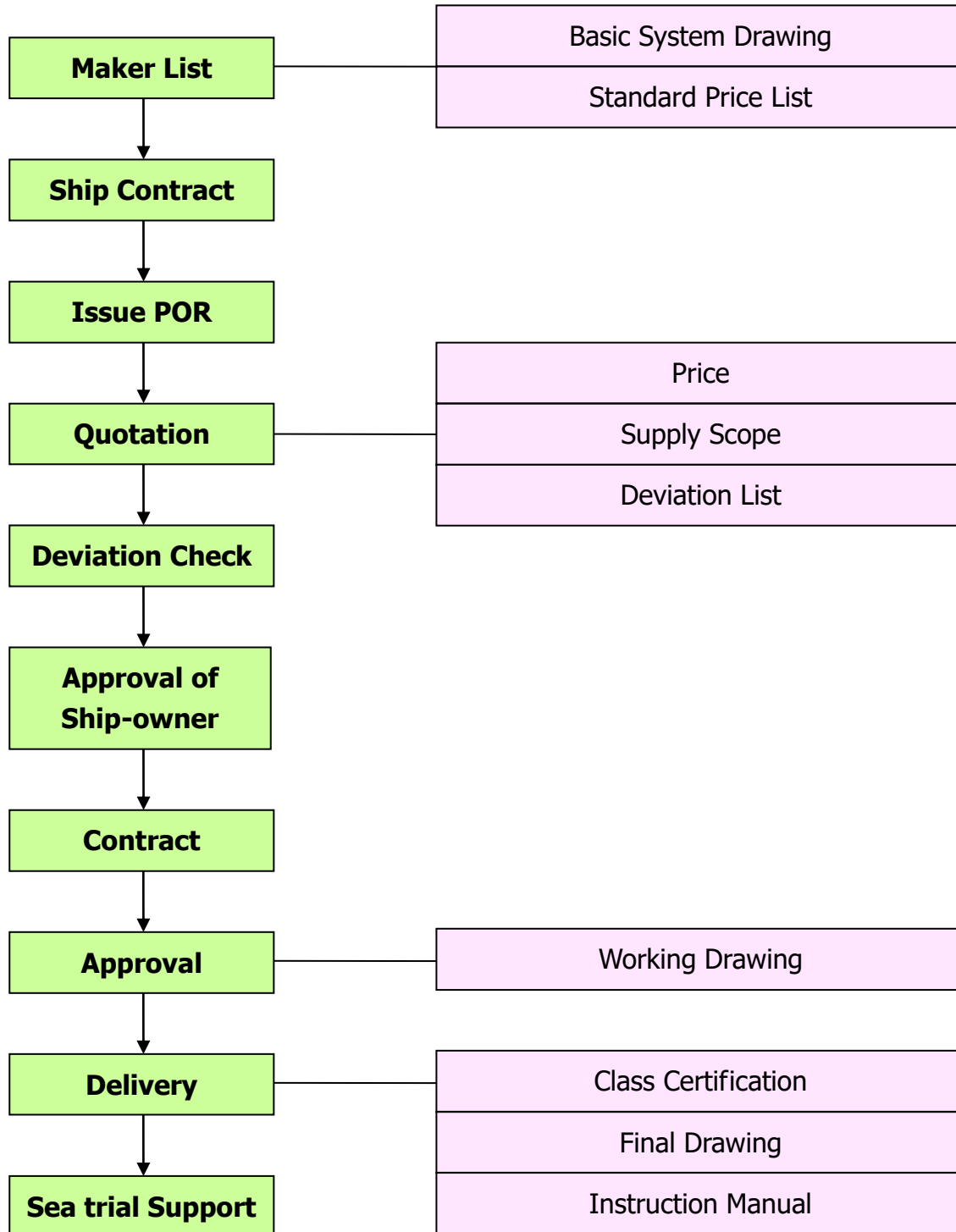


<Compressed Air Starter>

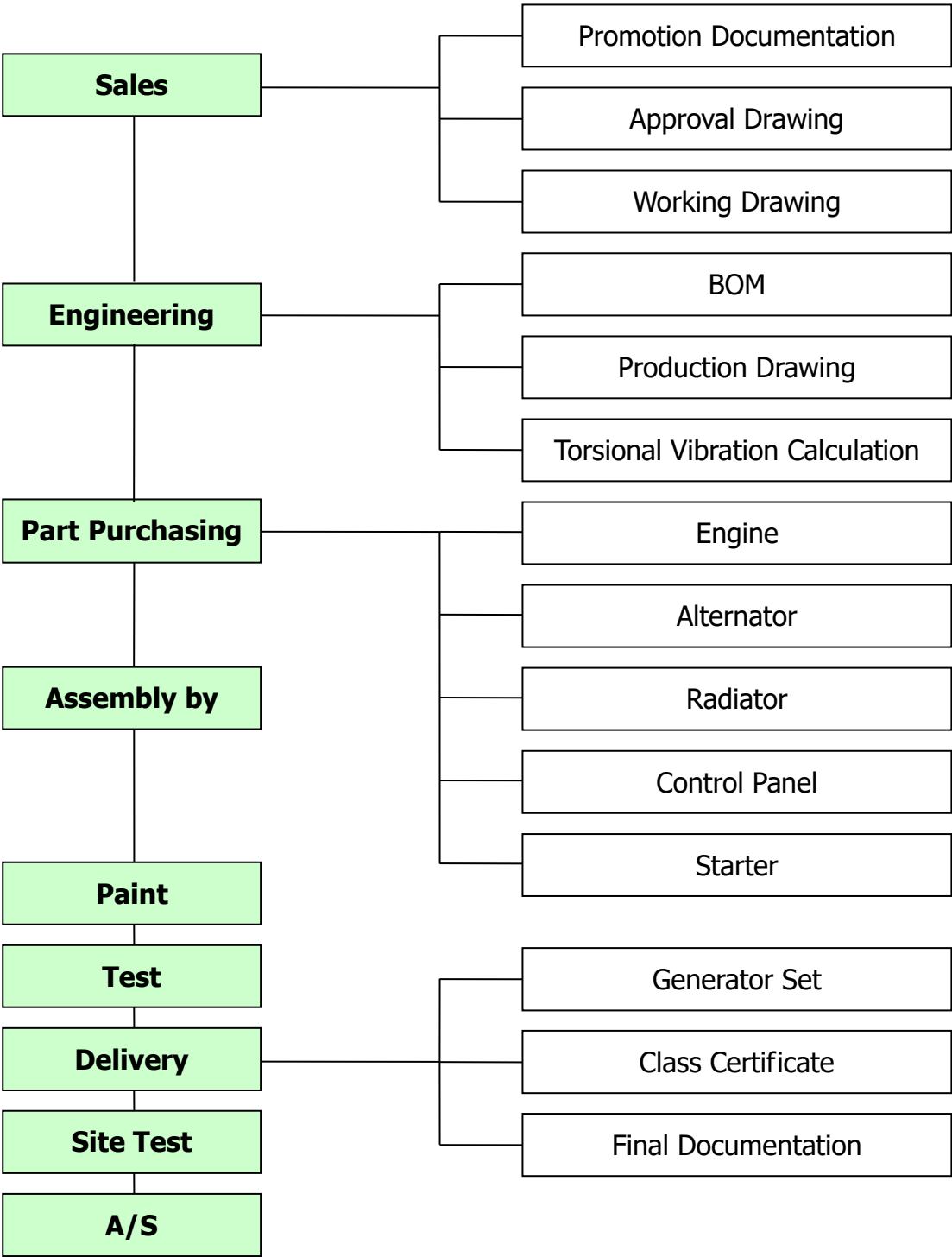
Suppliers of Parts

Unit Name	Supplier	Remarks
Diesel Engine	DOOSAN INFRACORE CUMMINS MTU WEICHAI	KOREA UK/USA GER CHINA
Alternator	NIDEC LEROY SOMER CUMMINS GENERATOR	JAPAN UK
Hydraulic Starting	PRESTOLITE KTI IPU GALI	UK USA UK SPAIN
Air Starting	TDI IPU GALI Ingasol Rand	USA UK SPAIN USA
Spring Starting	STARTWELL	UK
Vibration Isolator	TRELLEBORG	UK
Control Panel	KMC	KOREA
Radiator	DAEHEUNG RADIATOR	KOREA
Common Bed	DOOSUNG	KOREA

Business Procedure



Production Process



Suggestions

ACTIVITY OF GPC

- **SATISFYING TO EXPECTATIONS OF CUSTOMERS**
- **MORE COMPACT SIZE**
- **VARIETY OF OPTIONS**
- **MINIMUM OVER-HEAD COST**

**THE WORLD RENOWNED
EMERGENCY GENERATOR MANUFACTURE**

ADVANTAGES OF PURCHASE

- **EMERGENCY GENERATOR SET AT REASONABLE PRICE**
- **SAVING LABOR FROM STANDARDIZATION**
- **JUST ON TIME**



GPC

<http://www.gpckorea.com>

Tel : (82) 55 343 9870 Fax : (82) 55 343 9875 E-mail : gpc@korea.com

#217 Jinsan daero, Jinyeong eup, Gimhae, Gyeongnam, Korea